

# Heraeus Kulzer

Mitsui Chemicals Group

## CHARISMA®

Now with  
ceramic-reinforced  
formula!

Charisma® / Charisma® Flow  
Naturally reliable.



Giving a hand to oral health.

# Charisma® – The naturally reliable all-rounder.

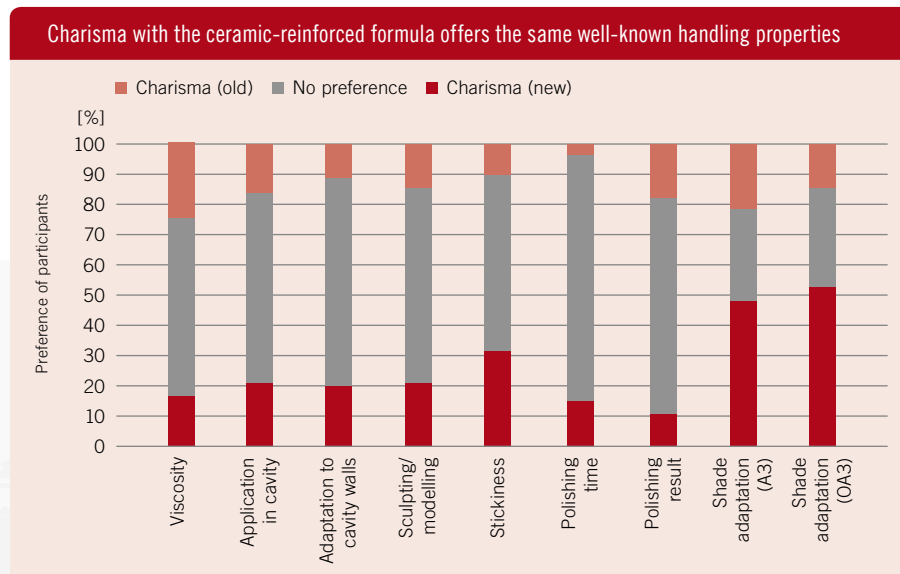
## Easy and uncomplicated restorations up to date.

Easy handling and reliability are what you expect from the natural restorations of Charisma, our uncomplicated filling material. As one of the first universal composites on the dental market when launched in 1992, it has set standards in composite workability. Since then it has been used every day for over twenty years – in millions of fillings – by practitioners around the world.

Based on our expertise and long-term experience with Charisma, we improved the formula in order to keep this popular universal composite up to date. While your personal habits for using Charisma remain unchanged, the ceramic-reinforced formula ensures long-lasting natural results with even more ease of application.

The updated Charisma performs with the same uncomplicated convenience as always. You, however, will manage natural results with easy single-shade layering techniques even more easily. See for yourself!

### Dentists affirm in a detailed prototype test:



Source: Prototype test with 133 participants in 2014, Product Application, Heraeus Kulzer GmbH. Documentation available.



# Charisma® –

With increased chameleon effect.

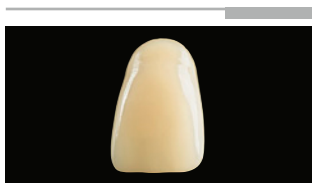
With Charisma, you handle single-shade layering techniques ever so easily.

The newly added ceramic fillers enable vital shades and an improved shade match. This in turn increases the well-known chameleon effect which helps meet patients' demands for natural and long-lasting restorations all over the world.

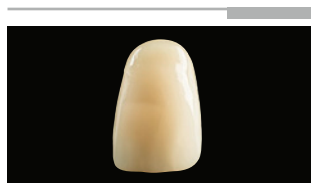
More than ever, Charisma stands for natural restorations made easy:

- Easy and fast modelling through its creamy consistency.
- Its radiopacity enables a safe and reliable diagnosis.
- Excellent finishing and polishing properties.

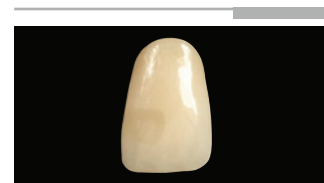
The secret behind the intensely natural look: Charisma's ideal shade match makes single-shade layering techniques even more easy and convenient.



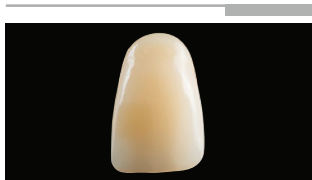
Charisma – New



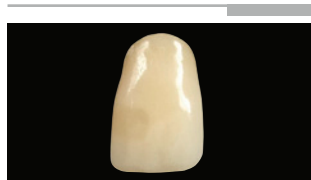
Charisma – Old



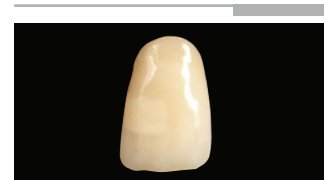
Z100 (3M Espe)



Herculite XRV Ultra (Kerr)

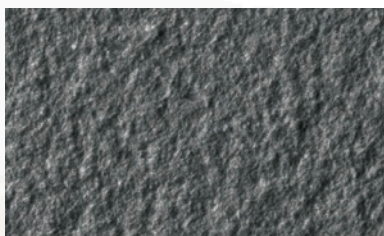


Gaenial Anterior (GC)



Amelogen Plus (Ultradent)

Charisma provides a fine surface texture – the finishing and polishing properties remain as easy and convenient as ever.

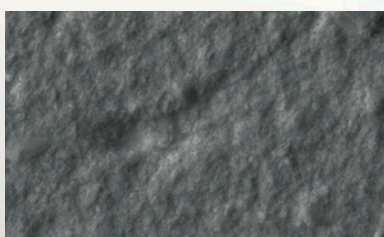


Kulzer 4190 2014.05.20 09:09 LT D2,0 x5,0k 20 um

Old Charisma before and after polishing

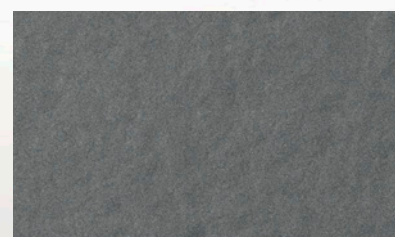


Kulzer 4192 2014.05.20 10:05 LT D2,1 x5,0k 20 um



Kulzer 4162 2014.05.19 16:18 LT D1,9 x5,0k 20 um

New ceramic-reinforced formula  
before and after polishing



Kulzer 4171 2014.05.19 16:39 LT D2,0 x5,0k 20 um

# Charisma® / Charisma® Flow – Naturally reliable.

**CHARISMA®**

## Charisma® Flow – The flowable all-rounder.

Charisma Flow is the ideal supplement to the long-established submicron-hybrid composite Charisma. Its low viscosity and good thixotropy makes it the ideal choice for many indications like cavity lining, fissure sealing and minimally invasive fillings.

### Charisma Flow stands for safe usage and a high standard of naturally reliable restorations

- Versatile all-rounder for many indications.
- Easy and fast handling due to its low viscosity and good thixotropy.
- Its radiopacity enables a safe and reliable diagnosis.
- Pronounced chameleon effect.
- Shades of Charisma Flow optimally match the Charisma shades.

## Product range.

### Charisma Shade Guide

Art.-No.: 66061391

Shades	Charisma Syringe 1 x 4 g	Charisma PLT 20 x 0.25 g	Charisma PLT 10 x 0.25 g	Charisma Flow Syringe 1 x 1.8 g
<b>Universal shades</b>				
A1	66000085	66000103		66015495
A2	66000086	66000104		66015496
A3	66000087	66000105		66015497
A3.5	66000088	66000106		66015498
A4	66000089	66000107		
B1	66000090	66000108		
B2	66000091	66000109		66015499
B3	66000092	66000110		66015500
C2	66000093	66000111		
C3	66000094	66000112		
C4	66000095	66000113		
D3	66000096	66000114		
<b>Opaque shades</b>				
OA2	66000097		66000115	66015501
OA3	66000098		66000116	
OA3.5	66000099		66000117	
OA4				66015502
Baseliner				66015504



# Charisma® – Now with ceramic-reinforced formula.

**CHARISMA®**

## Easy handling meets up-to-date technology.

We always strive to exceed our customers' expectations and to continuously update our products. On the basis of our long-term experience in composite technology, we don't hesitate to make something good even better. That is why we adapted the Charisma formula by using the latest improvements in filler technology. The microhybrid composite is the first composite on the dental market to contain feldspar. This material reinforces our filler system and adds up to a number of improvements:

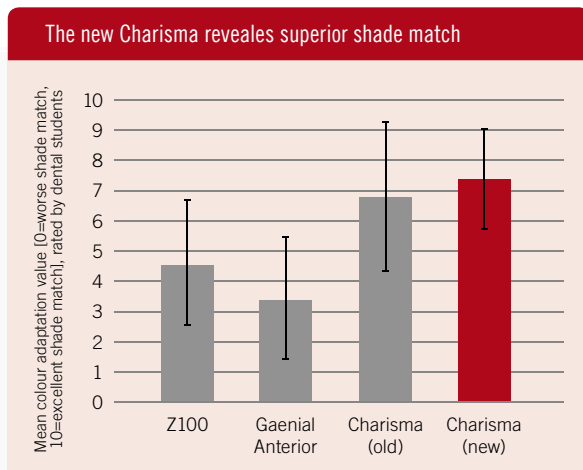
### The ceramic-reinforced Charisma formula

- facilitates single-shade layering techniques
- makes the shade selection and match more convenient, and
- improves the composite's physical properties.



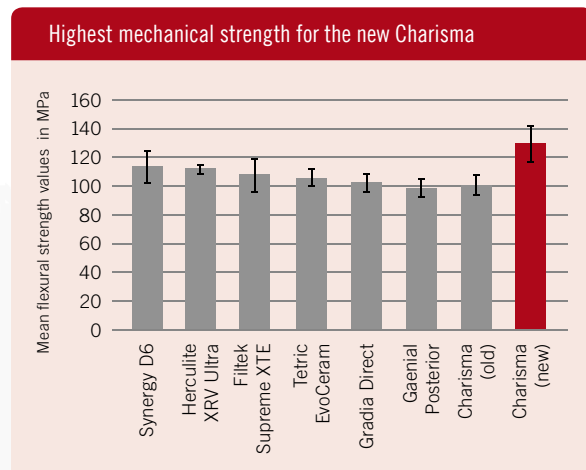
Feldspar is commonly used in glassmaking and ceramics. In dental ceramics, particularly pure feldspar gives a fine structure to the material, making it very similar to the natural tooth.

A comparison of different composites for single-shade layering techniques depicts the superior shade match of our improved Charisma



Source: Evaluation of colour adaptation value, University of Mainz. Unpublished data. Documentation available.

The comparison of the flexural strength of different composites provides indication of the material's resistance to mastication forces



Source: Heraeus Kulzer R&D, Wehrheim. Internal data. Documentation available.



## iBOND® Universal – All-purpose convenience.

Our definition of universal bonding is convenience:

- **Unique moisture control and instant bonding success:** Due to the unique moisture control system and optimised monomer blend, iBOND Universal offers excellent dentine penetration and reliable bond strength.
- **The all-rounder for bonding matters:** iBOND Universal enables bonding of composite, precious metal, non-precious metal, zirconia or glass ceramic, and is compatible with light-cure, dual-cure and self-cure materials.
- **Easy and precise application:** Self-etch, total-etch or selective etch – the choice is yours. In addition, our specially designed drop control delivers just the amount of bonding agent you need.



**Contact in Scandinavia:**  
**Heraeus Kulzer Nordic AB**  
 Florettgatan 18  
 SE-250 24 Helsingborg  
 Phone +46 42 45307-00  
 Fax +46 42 45307-01  
 nordicdental@kulzer-dental.com  
 www.heraeus-kulzer.se

**Contact in Australia & New Zealand:**  
**Heraeus Kulzer Australia Pty Ltd**  
 Level 9, Avaya House, 123 Epping Road  
 Macquarie Park NSW 2113  
 Phone +61 2 8875-7765  
 sales.mckulzer@kulzer-dental.com  
 www.heraeus-kulzer.com

**Contact in the United Kingdom:**  
**Heraeus Kulzer Ltd**  
 Heraeus House  
 Albert Road, Newbury  
 Berkshire, RG14 1DL  
 Phone +44 1635 30500  
 Fax +44 1635 524622  
 Sales.uk@kulzer-dental.com  
 www.heraeus-kulzer.com