

Non contractual document - Ref. 299231 - V1-02/2020 - Copyright © 2020 PIERRE ROLLAND. All rights reserved. No information or part of this document may be reproduced or disclosed in any format without the prior authorisation of PIERRE ROLLAND.



IT'S TIME FOR ATRAUMATIC SULCULAR OPENING

EXPASYL™ EXACT



NEW
ONE DOSE
ONE PATIENT



EN



References	Products
EXPASYL™ EXACT (0.3g CAPSULES)	
Ref. 261 011	Expasyl™ Exact x 50
Ref. 261 010	Expasyl™ Exact x 20
Ref. 261 036	Applicator
EXPASYL™ - KIT & APPLICATOR (1g CAPSULES)	
Ref. 294 100	Minikit: 1 Applicator + 6 Capsules + 12 Straight Cannulas (bendable)
Ref. 260 900	Applicator x1
EXPASYL™ - CAPSULES & CANNULAS (1g CAPSULES)	
Ref. 261 030	Capsules x 20
Ref. 294 010	Capsules x 6
Ref. 261 001	Strawberry Capsules x 20
Ref. 261 005	Straight Cannulas (bendable) x 100
Ref. 261 040	Straight Cannulas (bendable) x 40
Ref. 261 015	Pre-bent Cannulas x 100
Ref. 261 045	Pre-bent Cannulas x 40

Not available in all countries. Please contact your dealer.

Class I medical device - CE - For professional dental use only.
Read the instructions in the notice carefully before use.
All information that is essential to ensure correct use of these devices is included in the summary of the product characteristics available on the laboratory's website.
Manufacturer: Produits Dentaires Pierre Rolland - France.
Update: February 2020

PRODUITS DENTAIRE PIERRE ROLLAND SAS | A company of ACTEON Group
Zone Industrielle du Phare | 17 av. Gustave Eiffel | 33700 MERIGNAC | FRANCE
Tel + 33 (0) 556 34 06 07 | Fax + 33 (0) 556 34 92 92
E-mail : pierre-rolland@acteongroup.com | www.acteongroup.com

PRESERVED SULCULAR OPENING, HYGIENIC, COST EFFECTIVE, ONE DOSE CAPSULE.



With the creation of Expasyl™, Acteon GROUP was the first to propose to dental surgeons an atraumatic compound which allows a sulcular opening without breaking the epithelio-conjunctive attachment.

Expasyl™ facilitates accurate and pain free impressions of the subgingival space for the successful completion of your prosthesis. Expasyl™, is acclaimed by digital impression camera users (CAD/CAM) for its tangible results.

EXPASYL™ 20 YEARS

of clinical expertise all around the world

ORIGINAL
EXPASYL™
FORMULA

ONE CAPSULE
= ONE PATIENT
Up to 3 teeth

COST
EFFECTIVE
No wasted material

ASTRINGENT
EFFECT

FULL
PROCEDURE
WITHIN
3 MIN

NO ANESTHESIA
REQUIRED
no bleeding, no recession,
no pain

NO RISK
OF LESION TO
THE EPITHELIAL
ATTACHMENT

BETTER
AESTHETIC
RESULTS



THE RIGHT PRESSURE FOR PERFECT

SULCULAR OPENING

DEMONSTRATED PERFORMANCE⁽¹⁾⁽²⁾⁽³⁾



AJ. Faucher, Académie du Sourire

- PRESERVED SULCULAR OPENING AND EFFICIENT DRYING
- ASTRINGENT EFFECT: NO BLEEDING
- CLINICAL EFFICACY
- PRESERVES THE EPITHELIAL ATTACHMENT AND GUM LINE
- FAST, SIMPLE AND COST-AFFORDABLE PROTOCOL

EFFECTIVE AND ATRAUMATIC

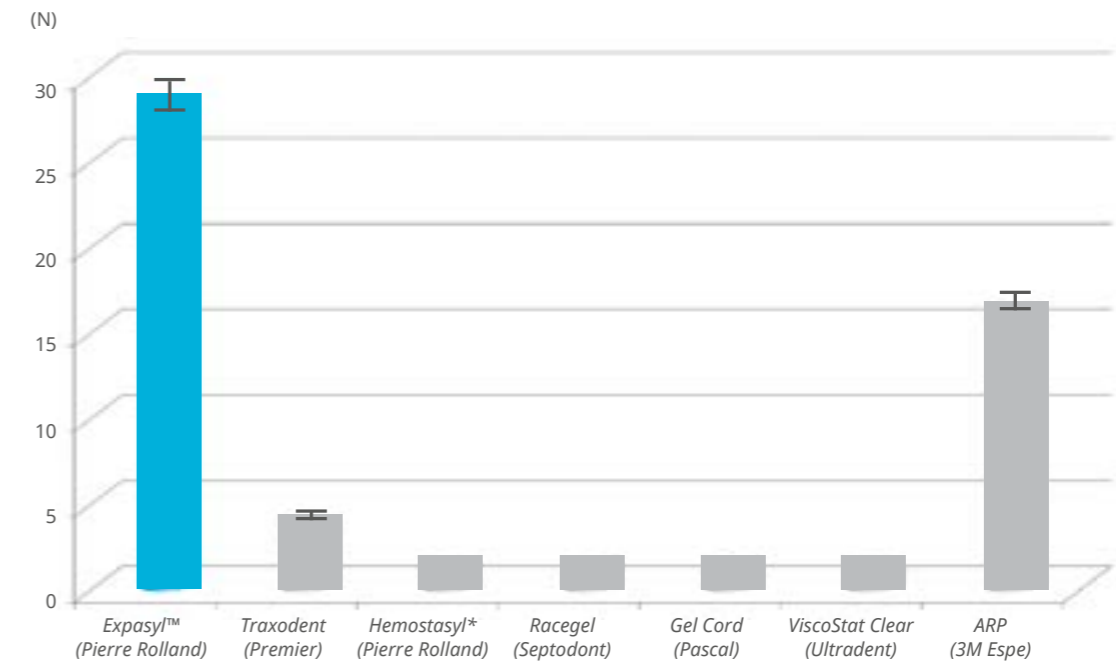


Expasyl™ Exact paste provides excellent benefits with little risks. Its viscosity has been carefully calculated to open the sulcus effectively without damaging the epithelial attachment.

Your procedure is both safe and effective. No need to wait for the tissue healing since it has not been damaged.

- ▶ Expasyl™ generates a pressure that is 37 times less than a cord (143 vs 5396 kPa)⁽¹⁾
- ▶ The epithelial attachment is preserved (the integrity of the epithelial attachment is no longer guaranteed above 2400 kPa)⁽²⁾. The risk of gingival recession and bone resorption are reduced
- ▶ Your patient doesn't suffer

- ▶ Expasyl™ generates pressure that is 1.7 to 9.2 times **greater than other retraction paste** available on the market⁽³⁾



Adapted from American Association for Dental Research

THE SOLUTION FOR EVERY CLINICAL SITUATION

Expasyl™ Exact offers a wide **range of applications**



AJ. Faucher, Académie du Sourire

- CONVENTIONAL AND DIGITAL IMPRESSION
- CLASS II AND V PRESERVATIVE CARE
- SEALING/BONDING
- IMPLANTOLOGY

⁽¹⁾ Bennani V, Aarts JM, He LH. A comparison of pressure generated by cordless gingival displacement techniques. *J Prosthet Dent.* 2012 June;107(6):388-92.

⁽²⁾ Bennani V, Inger M, Aarts JM. Comparison of pressure generated by cordless gingival displacement materials. *J Prosthet Dent.* 2014 Aug;112(2):163-7.

⁽³⁾ Klettle T, Schulte C. "Force required to displace Pastes and gels for Gingival retraction", 2012 AADR Annual Meeting (Tampa, Florida) - Poster Session ID 1364.

* Note: Hemostasyl is included in this study but is not a retraction compound.

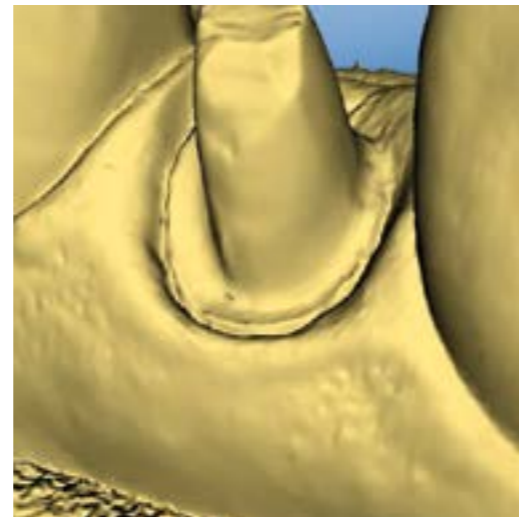
YOUR PARTNER FOR A NATURAL AND AESTHETIC PROSTHESIS



SUPERIOR TISSUE MANAGEMENT

ONE DOSE
ONE PATIENT

- ▶ One dose, one patient for ease of use
- ▶ Avoid cross-contamination
- ▶ Cost-effective : no waste of material, up to 3 teeth
- ▶ Works with ANY composite applicator gun



P. Lalet, e-dentisterie

GREAT
IMPRESSION

- ▶ The compound opens the sulcus and dries it (blood, saliva and fluids) **completely**
- ▶ Expasyl™ facilitates access to the preparation limits and emergence profile for perfect impressions

«Like a traditional impression, a digital imprint requires a precise reading of the limits and no bleeding. For this subgingival preparation covering the dark side of the tooth, the gum tissue quickly repositions itself on the margin, making it impossible to read. Expasyl™ makes it possible to open the sulcus and dry the place for a right impression. Because reading is easier, the procedure is completed more quickly.»

Dr. P. Lalet,
E-dentisterie

RETRACTION CORD VS EXPASYL™ EXACT*

- ▶ Accessibility to cervical limits without damaging the gingival tissues is essential.

Retraction cord causes acute injury as laceration and irreversible trauma to the attachment. The risks are recession, loss of epithelial attachment.

Moreover if the sulcus is damaged, the chemical agents included in the cord penetrate into deep layer cells. This may induce delayed healing, bone loss and peri-implantitis.

These phenomenom are inadvisable around implant as they reduce the long-term success of the implant project.⁽¹⁾

- ▶ With Expasyl™ Exact, the preparation limits and emergence profile are fully accessible. By recording these 2 parameters, you obtain a perfectly adapted prosthesis in terms of mechanic and aesthetic expectations.



«[...] the Expasyl™ system, making it possible to deflect the gums without breaking the epithelial attachment and to create an impression for a prosthesis that meets the state of the art.»

Dr. Jacques CHARON,
FRANCE, Periodontist

* Expasyl™ Exact: Same paste as Expasyl™

⁽¹⁾ New Zealand dentists' use of gingival retraction techniques for fixed prosthodontics and implants" - Azza Al-Ani. Auckland District Health Board, Greenlane Clinical Centre, Auckland, New Zealand. Vincent Bennani, Nicholas P. Chandler, Karl M. Lyons, W. Murray Thomson. School of Dentistry, University of Otago Dunedin, New Zealand - New Zealand Dental Journal, 2010 Sep;106(3):92-96

FAST, SIMPLE AND COST AFFORDABLE

BLE PROTOCOL

3 MINUTES PROTOCOL- TIME SAVING

- ▶ Placement: **easily inserts into the sulcus** in 20 seconds. No cannulas required
- ▶ Contact time: works in **1-2 minutes max**
- ▶ Removal: easily removed with a gentle air-water spray



MONEY SAVINGS

- ▶ Expasyl™ Exact capsule avoids wasted material
- ▶ No need for additional anesthesia or hemostasis
- ▶ **Time savings:** up to 5 minutes per tooth (especially helpful when preparing multiple teeth)
- ▶ Impression made at the same clinical time



Rinse and gently dry the preparation on a healthy periodontium



Position the end of the cannula
Slowly extrude



to create a closed space.
the material.



Inject the paste in the sulcus all around the tooth to ensure the best possible impression quality



Let Expasyl™ Exact act for **1-2 min max**. The gum tissue whitens, indicating the compression exerted by the material.



Clear the paste with a gentle air water spray with simultaneous surgical aspiration



The sulcus is opened, and the site is completely dry.
No injury. No pain. No bleeding.
The impression can be taken.

EXPASYL™ PASTE* FOR ALL CLINICAL CASES

CASE 1



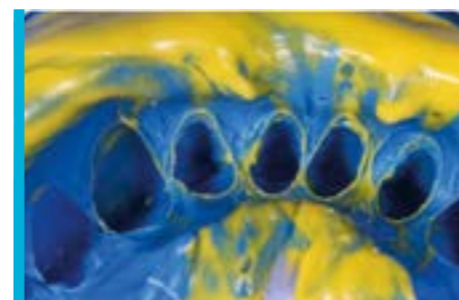
1 The teeth are prepared for veneer restorations. The limits are very slightly subgingival.



2 End of gingival retroversion with nothing but the use of Expasyll™ left on for 2 minutes.



3 After removing the product and drying the preparations, light silicone is applied to the incisal portion. It is pushed into the open sulcus with no trauma by the heavy silicone, using the triple mixture method.



4 Result of the imprint: the sulcular space is defined by the light silicone.



5 The temporary veneers are in place.



6 Final result one year after the procedure.
AJ. Faucher
Académie du sourire

CASE 2



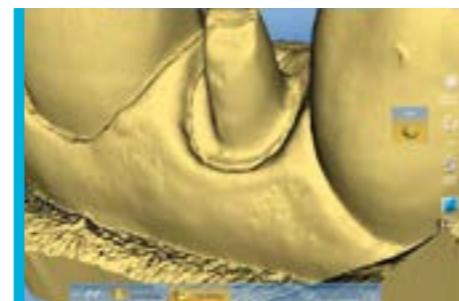
1



2



3



4



5

CASE 3



1 Teeth 16 and 17 before Expasyll™



2 Expasyll™ left in place for 1 minute.



3 Teeth 16 and 17 after Expasyll™ removal.



4 Cerec virtual model with preparations 16 and 17. Very readable preparation limits thanks to Expasyll™.



5 e-max CAD porcelain caps in place (photo 10 days after placement). The limits are compliant, and the gum tissue is intact.
G. Aldié

* Expasyll™ Exact: Same paste as Expasyll™