



ZenFlex™

NiTi Rotary Shaping File System

Maximum Strength. Minimally Invasive.

Featuring an ideal balance of strength and flexibility, ZenFlex lets you reach the full working length with reduced risk of breakage while preserving more tooth integrity.



High Cutting Efficiency

Designed with triangular cross section with proprietary heat treatment, ZenFlex exhibits high cutting efficiency that lets you reach the full working length of even complex root geometries.



Minimally Invasive

A maximum flute diameter of 1mm and a non-cutting tip work together to minimize transportation and preserve the tooth's structural integrity.



Exceptional Strength

Resists torsional stress and cyclic fatigue resulting in minimal breakage and reduced transportation.



Excellent Flexibility

Proprietary heat-treatment design delivers excellent controlled memory and flexibility for up to 90° curves.



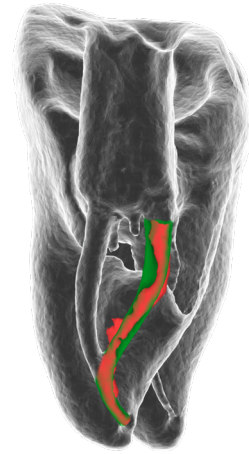
Corresponding ZenFlex Gutta Percha Points

Choose the corresponding size and taper to meet the needs of each root canal procedure.

Follow the Curvature. See the Difference.

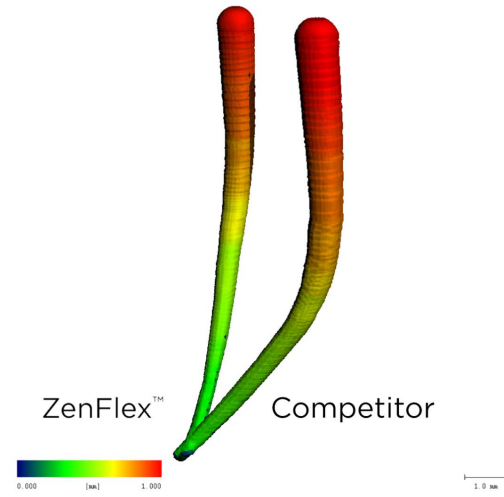
We invited leading endodontist Dr. Stephen Buchanan to put ZenFlex to the test. Dr. Buchanan found that ZenFlex is able to shape severely curved canals.

He also found that ZenFlex is able to maintain more tooth structure after RCT, due to its 1mm maximum flute diameter.



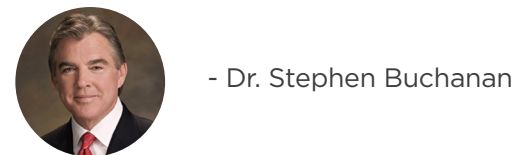
● Pre-Op Canal ● Shaped Canal

*CT scans taken from extracted teeth.



ZenFlex From the Professionals' Perspective.

“ ZenFlex shaping instruments have variable-pitch flute angles that prevent them from threading into canals, provide them with enormous chip space between flutes, and help prevent tip breakage. These sophisticated instruments deliver single-file shapes without transporting canals due to their variable-heat treatment. Customizing heat treatment for each file size produces smaller files with more shape memory to prevent unwinding and larger files with remarkable ductility. It also has a 1mm maximum flute diameter in order to better maintain the structural integrity of teeth after RCT, and Kerr's AutoFit gutta percha points fit well to the ends of canal shapes cut by ZenFlex Files. ”



- Dr. Stephen Buchanan

“ The ZenFlex Rotary Files cuts smoothly and efficiently reaching working length in reduced time. ”



- Dr. Bernice Ko

“ I really like the control memory of ZenFlex. It's one of my favorite features about the file. I have had three cases recently where I wish I could have used the ZenFlex file on because of the severe “S” shaped curvatures of the roots. ”

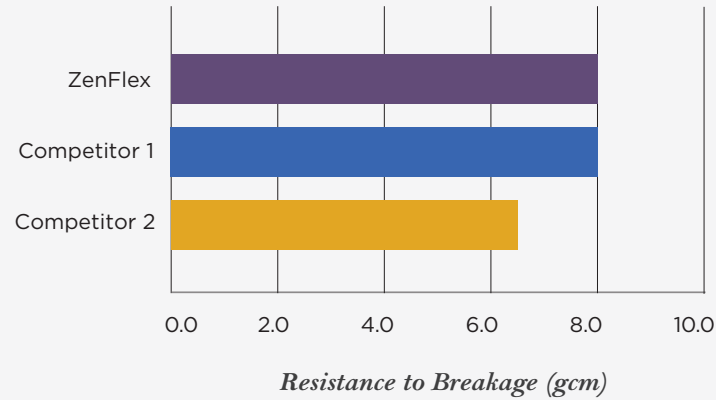
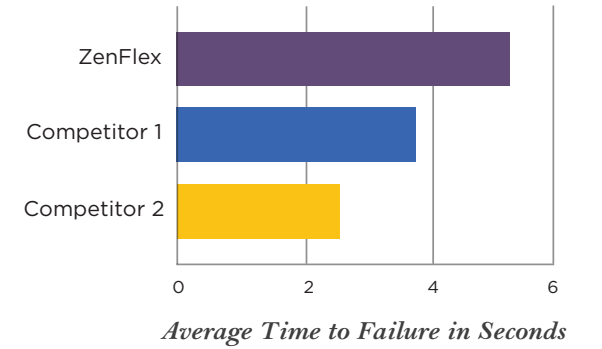


- Dr. Matthew Miller

Dr. Ko, Dr. Buchanan, and Dr. Miller are paid consultants of Kerr.

When Failure is Not an Option.

Compared to other brands, ZenFlex delivers greater resistance to cyclic fatigue. This results in longer time to failure and shorter time to reach the working length while minimizing the risk of breakage and transportation.



Torque Strength.

ZenFlex is designed to be as resistant or more resistant to torsional stresses relative to major rotary file competitors despite having a 20% smaller maximum flute diameter and smaller mass.

● ZenFlex ● Competitor 1



Flexibility Meets Memory.

Every canal anatomy is different, and some are more complex than others. Designed with proprietary heat-treatment technology, ZenFlex provides excellent flexibility for up to 90° curves.

With exceptional controlled memory, ZenFlex maintains its pre-curved shape, resulting in easier insertion into even the most challenging canal anatomies.



Gutta Percha Points.

Use your ZenFlex confidently and precisely. ZenFlex Gutta Percha Points match with canals shaped by ZenFlex NiTi Files.

Data on File.

ZenFlex Adapts to Your Needs.

With a wide selection of tip and taper configurations.

Ordering Information

ZENFLEX NITI SHAPING FILES PACK OF 6

Taper	Tip	21mm	25mm	31mm
.04	20	818-1206	818-1207	818-1208
	25	818-1256	818-1257	818-1258
	30	818-1306	818-1307	818-1308
	35	818-1356	818-1357	818-1358
	40	818-1406	818-1407	818-1408
	45	818-1456	818-1457	818-1458
	50	818-1506	818-1507	818-1508
	55	818-1556	818-1557	818-1558
.06	20	818-2206	818-2207	818-2208
	25	818-2256	818-2257	818-2258
	30	818-2306	818-2307	818-2308
	35	818-2356	818-2357	818-2358
	40	818-2406	818-2407	818-2408
	45	818-2456	818-2457	818-2458
	50	818-2506	818-2507	818-2508
	55	818-2556	818-2557	818-2558

GUTTA PERCHA POINTS PACK OF 50

Taper	Tip	30mm
.04	20	825-9420
	25	825-9425
	30	825-9430
	35	825-9435
	40	825-9440
.06	45	825-9445
	20	825-9620
	25	825-9625
	30	825-9630
	35	825-9635
	40	825-9640
	45	825-9645

ZENFLEX NITI SHAPING FILES ASSORTED PACK OF 6

Taper	Tip							21mm	25mm
.04	20	25	30	35	40	45	818-1421	818-1425	
.06	20	25	30	35	40	45	818-1621	818-1625	

GUTTA PERCHA POINTS ASSORTED PACK OF 60

Taper	Tip							30mm
.04	20	25	30	35	40	45	825-9400	
.06	20	25	30	35	40	45	825-9600	



For added flexibility and control, ZenFlex works with your preferred endodontic motor and handpieces.