

# Designed to Provide a Less Invasive and More Comfortable Cavity Preparation Experience



Fissurotomy®  
Original



Fissurotomy®  
Micro STF



Fissurotomy®  
Micro NTF

**FISSUROTOMY®**  
CONSERVATIVE PREPARATION & EXPLORATION BURS

Advanced Cavity Preparation



simply better dentistry™  
**WHITE®**



# Explore and Restore Suspect Pit and Fissures In 3-5 Minutes

Developed in collaboration with Temple University, the Fissurotomy® instrument head shape allows early diagnosis and conservative preparation of fissure caries and is virtually pain free and creates an ideal cavity form.

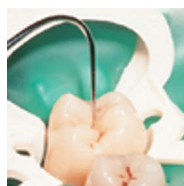
*Fissurotomy Instruments are essential when removing decay in deep lesions because they preserve the healthy dentin. This reduces post-operative sensitivity and avoids unnecessary root canal procedures."*

*-- Howard S. Glazer, DDS*

## The Problem: Hidden Caries

Increased fluoride use has made it difficult to detect fissure caries using explorers and x-rays.

A large percentage of suspect fissures have decay present.



### No Stick

Surface of fissure in enamel looks relatively healthy, and the explorer does not detect lesion. But you're suspicious because of the decalcification and subsurface staining.



### No X-Ray Evidence

Radiographs do not detect all occlusal lesions. Enamel thickness can be deceptive. You're still suspicious.

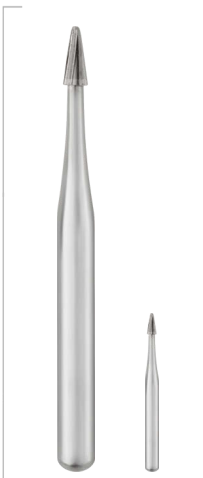


### Decay Present

A cross section of the same tooth confirms your suspicion. It clearly shows the lesion deep in the enamel and the dentin.

# The Solution:<sup>®</sup> The Fissurotomy Bur

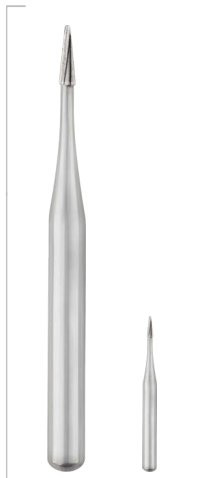
Images Increased to show detail



**ORIGINAL**  
Fissurotomy<sup>®</sup> Original

ITEM# FG 18010  
FGSS 18011  
10 PK

Head Length (mm) 2.5  
Max Head Diameter (mm) 1.1



**Narrow Taper Fissure**  
Fissurotomy<sup>®</sup> NTF

ITEM# FG 18014  
FGSS 18016  
10 PK

Head Length (mm) 2.5  
Max Head Diameter (mm) 0.7

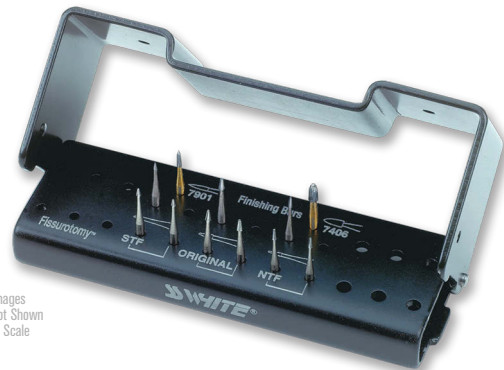


**Shallow Taper Fissure**  
Fissurotomy<sup>®</sup> STF

ITEM# FG 18013  
FGSS 18015  
10 PK

Head Length (mm) 1.5  
Max Head Diameter (mm) 0.6

- Tip of bur is smaller and more conservative than 1/4 round.
- Fine carbide tip will not strip quickly like thin diamonds.
- Virtually pain free to the DEJ and in most cases no anesthesia is needed.
- Ideal cavity preparation form for a flowable composite.
- Cleaner, more controlled and less costly than air abrasion.



Images Not Shown to Scale

## Diagnostic & Finishing Bur Kit

Designed for the efficient diagnosis of suspect fissures and the finishing of the cavity preparation.

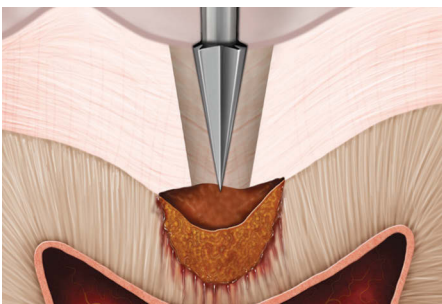
**Kit Reorder No. 18007**

**Kit Contents:**

- 3 ea. Original Fissurotomy<sup>®</sup> Burs
- 3 ea. Fissurotomy<sup>®</sup> Micro NTF Burs
- 3 ea. Fissurotomy<sup>®</sup> Micro STF Burs
- 1 ea. Finishing Bur #7901
- 1 ea. Finishing Bur #7406
- 1 ea. Autoclavable Bur Block

You and Your Patients Will Appreciate Fissurotomy<sup>®</sup> Instruments for Caries Removal of:

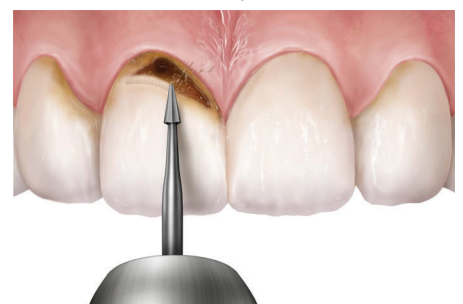
### Class I Preparation



### Class III Preparation



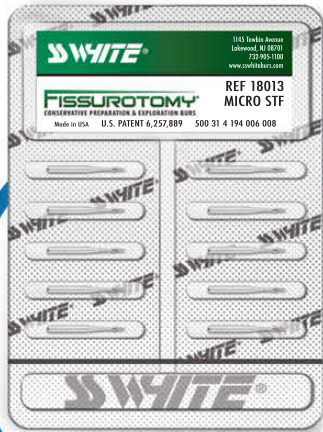
### Class V Preparation





# Nobody Likes the Feeling of a Needle!

With this needle free technology, cavities are something patients are now smiling about. Fissurotomy® Burs are exclusively designed to provide a less invasive and more comfortable cavity experience for patients when compared to use of current conventional treatments.



## Ultra-Conservative Caries Management System

