

Order Information

35485-35486 Aesthetic Kit Unidose/Syringe

Contains: 6 syringes (4g) or Unidoses (10x0.2 g) in shades: Enamel A2, A3, A3.5, Dentine A2, A3, Medium Incisal
 Accessories:
 Kolor Plus: 2 x bottles White and Blue
 Finishing and Polishing Kit
 OptiStrip Finishing and Polishing
 Stratification Guide

33856 - 33857 Standard Syringe/Unidose Kit

Contains: 10 Syringes (4 g) or Unidoses® (10x0.2 g) in shades: Enamel A1, A2, A3, A3.5, B2, B3 C2, D2 - Dentine A2, A3.
 Accessories:
 1 Premise Flowable composite (1.7 g)
 10 Tips for flowable composite
 1 OptiBond® Solo Plus™ Bottle (5 ml)
 1 Gel Etchant (3 g)
 1 OptiDisc® Sample Kit with 15 pcs of Extra Course, Medium Coarse, Fine and Extra Fine OptiDiscs size 12.6 mm and 2 mandrels
 25 Mixing Wells
 50 Applicator Tips
 10 Gel Etchant Syringe Tips.

33858 - 33859 Intro Syringe/Unidose Kit

6 Syringes (4 g) or Unidoses® (10x0.2 g) in shades: Enamel A1, A2, A3, A3.5, D2 - Dentine A2.
 Accessories:
 1 Premise Flowable composite (1.7 g)
 10 Tips for flowable composite
 1 OptiBond® Solo Plus™ Bottle (5 ml)
 1 Gel Etchant (3 g)
 1 OptiDisc® Sample Kit with 15 pcs of Extra Course, Medium Coarse, Fine and Extra Fine OptiDiscs size 12.6 mm and 2 mandrels
 25 Mixing Wells
 50 Applicator Tips
 10 Gel Etchant Syringe Tips.

33860 - 34071 Mini Kit Syringe/Unidose

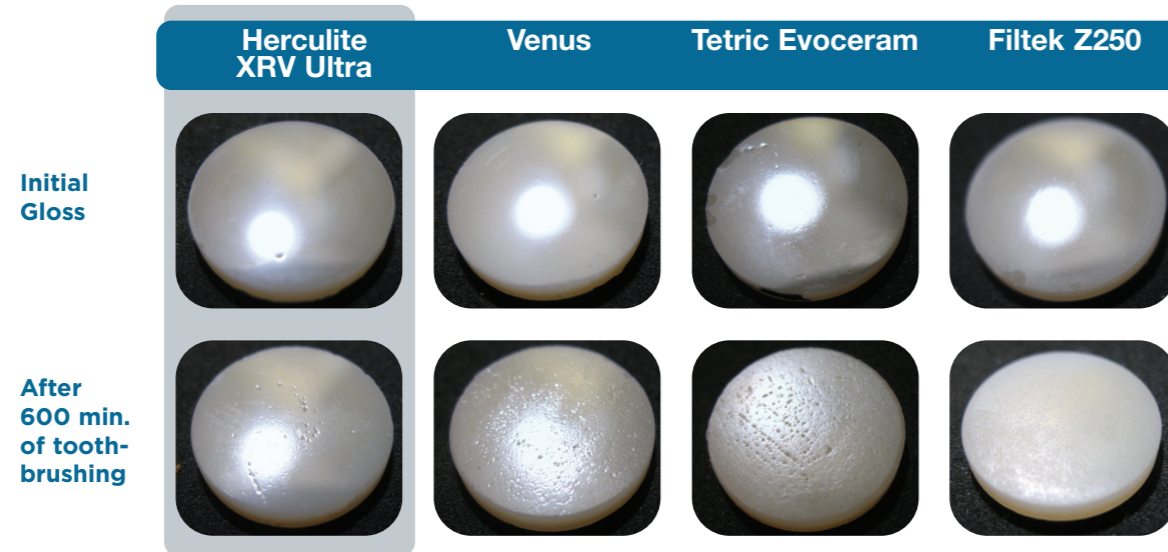
3 Syringes (4 g) or Unidoses® (10x0.2 g): Enamel A2, A3 and Dentin A2
 Accessories:
 1 OptiBond Solo Plus Bottle (5 ml)
 1 Gel Etchant (3 g)
 25 Mixing Wells
 50 Applicator Tips.

Refills- 4g syringes or 20 x 0.2g Unidoses

Available shades:
 Enamel: 16 Vita shades and XL (extra light)
 Dentine: A1, A2, A3, A3.5, B1, B2, C2, D2, D3
 Enamel shade Neutral.

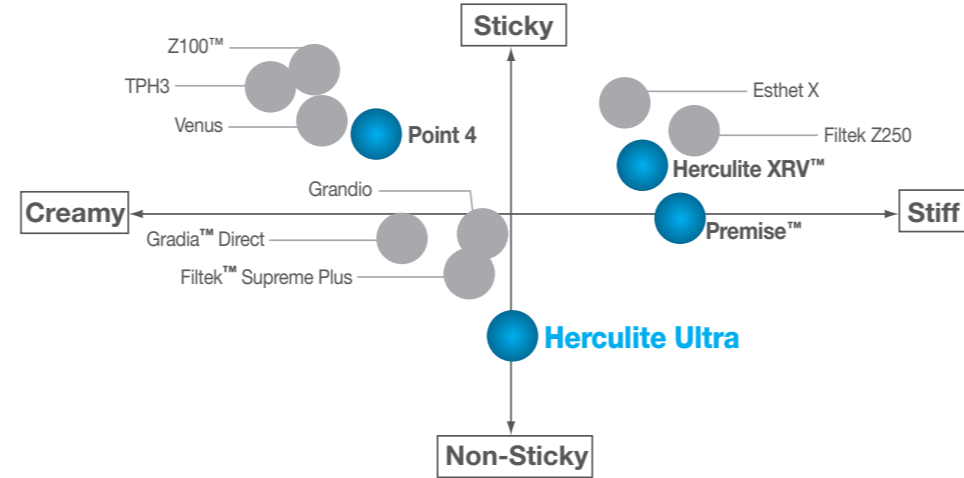
Polishability

Herculite XRV Ultra is fast polished into high initial gloss which then lasts over time.



Study conducted by University of Leeds, UK.

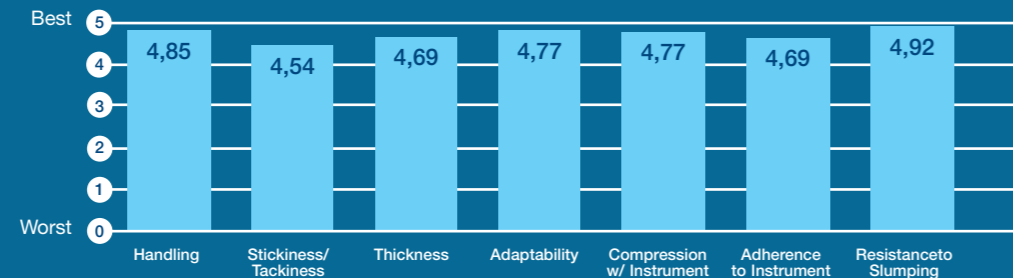
Handling Comparison Map



The Herculite resin matrix has been now optimized to yield creamy yet sculptable handling. The material thus has a balanced handling for use in both anterior and posterior restorations.
 Map was created with input from various clinicians and Kerr

Here's what clinicians are saying about Herculite Ultra

90% of focus group attendees said they would purchase Herculite Ultra over their current composite.



“Superb for a nanohybrid. Best composite ever”

“Adapts really well, not sticky at all, really sculptable”

Your practice is *our* inspiration.™

Herculite® XRV Ultra™ | Versatile, predictable, durable.



Herculite[®] XRV Ultra[™]

Herculite XRV Ultra is a universal composite material with excellent aesthetics for anterior restorations and is strong and durable for posterior restorations. The shading system enables various shading techniques based on the different aesthetic requirements – 1-layer, 2-layer or multi-layer techniques. Its balanced consistency allows easy placement in anterior as well as good packing in posterior cavities.

Features

1. Life-like aesthetics with superior polish.
2. Versatile shading system – 1-layer, 2-layer and multi-layer shading technique
3. Optimized handling for anterior and posterior use.
4. High mechanical strength for durable, long-term restorations.

“Thanks to Herculite XRV Ultra, there is no longer a need for multiple composite systems in your practice. Whether it is an anterior or posterior restoration, Herculite XRV Ultra fulfills your every need!”

Ara Nazarian DDS

Filler Technology

Point 4 Filler

(barium glass filler of 0.4 μ m average size)

- Clinically proven durability
- Clinically proven polish

Silica Nanofiller

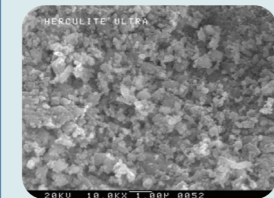
(20 – 50 nm)

- Enhanced polish
- Decreased shrinkage
- Optimal handling

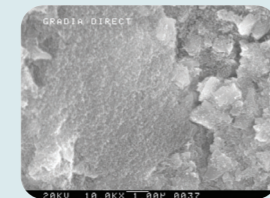
SEM Analyses

SEMs at 10,000 magnification of various filler systems. All resin is “burned off” to reveal the true particle size of each composite.

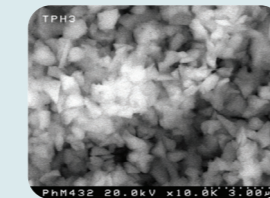
NANOPARTICLE COMPOSITES



Herculite XRV Ultra
Average Filler - Size 0.4 μ m

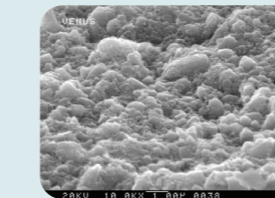


Gradia Direct
Average Filler - Size 0.85 μ m



TPH3
Average Filler - Size 0.7 μ m

MICROHYBRID COMPOSITE



Venus
Average Filler - Size 0.7 μ m

Plucking, or natural wear over time, tends to occur faster in restorations with larger particles, decreasing the overall life and aesthetics of the restoration. With proprietary 0.4 filler Herculite Ultra achieves high mechanical strength and at the same time excellent polish over time.

Prepolymerized Filler (PPF)

Large enough to increase loading, our PPF is a proprietary blend of low-shrinkage resin, barium glass and nanoparticles, so plucking becomes a nonissue.

- Exceptional ease of polish and gloss retention
- Enhanced handling characteristics
- Decreased polymerization shrinkage

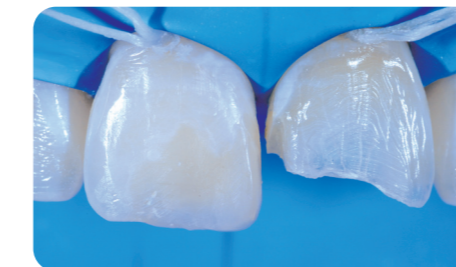
Shading System

Herculite XRV Ultra is offered in 3 opacities: enamel, dentine and incisal. The shading system allows the clinicians to choose from various shading techniques, depending on the aesthetic requirements and clinical situation.



One-layer technique in posterior restoration using A2 Enamel shade.

Case courtesy of Dr. Bruce LeBlanc



Multi-layer technique in anterior restoration.

Cases courtesy of Prof. Angelo Putignano



Two-layer technique in posterior restorations.

Case courtesy of Prof. Angelo Putignano



Pictures showing the match between Herculite XRV Ultra composite restoration following multi-layer and two-layer stratification and Vita shade guide tooth models.



Multi-layer technique



Two-layer technique

Stratification Guide

The all new step-by-step stratification guide for Herculite XRV Ultra gives a precise guidelines for mastering a highly aesthetic restorations matching perfectly the natural tooth anatomy in both anterior and posterior region.

2 LAYER TECHNIQUE ANTERIOR

PREPARATION OF THE TOOTH

MOCK-UP

Vita shade	A1	A2	A3	A3.5	A4
Enamel	A1	A2	A3	A3.5	A4
Dentine	A2 2.0 mm	A2 2.0 mm	A3 2.0 mm	A3 2.0 mm	A4 Enamel
Enamel	A1 0.3 mm	A2 0.3 mm	A3 0.3 mm	A3.5 0.3 mm	A4 0.2 mm

FINISHING & POLISHING

Sample A3 using dentine and enamel mass only, showing acceptable results.